



## COVID-19 Specific Health and Safety Guide for our Customers

Our goal is to keep you safe and well during your time in our distillery. If you have any further questions please email us: [info@cityofmanchesterdistillery.com](mailto:info@cityofmanchesterdistillery.com)

Doors will open 20 minutes early from 12:40pm for the 1pm session and 7:10pm for the 7:30pm session. It is important that everyone arrives on time.

**Our full address is 21 RED BANK, MANCHESTER, M4 4HF**

We are unable to open any earlier due to Health and Safety. Please visit a neighbouring bar if you'd prefer to wait indoors e.g: GRUB (50, Red Bank)

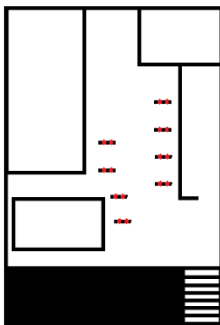
\*\*\*

To gain entry, confirm and sign the register at the door to confirm your details, we will keep this information for Track and Trace for up to 21 Days and our Health Screening Information Sheet for up to 2 years. We will provide you with hand sanitiser before seating.

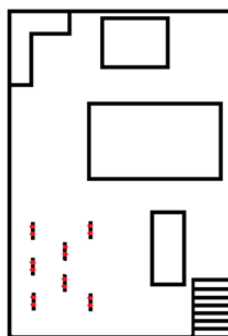
Customers that present flu-like symptoms including a high temperature or do not confirm/sign these documents may be refused entry. Masks and gloves are welcome and available throughout the experience but are not mandatory. Your host will give clear guidance at the start of your experience and throughout your tour.

- Keep to a minimum of 1-meter apart
- Do not share equipment or glasses, your host will bring you anything you may need
- Please stay seated or at your station unless it is to use your assigned bathroom
- Our gift shop accepts contactless payments only, no cash sales.

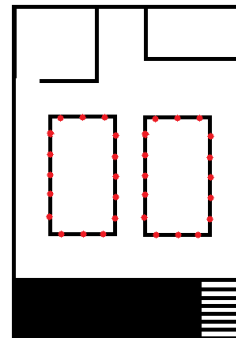
Please make note of your experience Date and Time, we do not send reminders or tickets via post or email.



Unit 21  
Upstairs



Unit 21  
Downstairs



Unit 23  
Upstairs