



## COVID-19 Specific Health and Safety Guide for Customers

Our goal is to keep you safe and well during your time in our distillery. If you have any further questions please email us: [info@cityofmanchesterdistillery.com](mailto:info@cityofmanchesterdistillery.com)

Doors will open 20 minutes early from 12:40pm for the 1pm session and 7:10pm for the 7:30pm session. It is important that everyone arrives on time.

**Our full address is 21 RED BANK, MANCHESTER, M4 4HF**

We are unable to open any earlier due to Health and Safety. Please visit a neighbouring bar if you'd prefer to wait indoors e.g: GRUB (50 Red Bank)

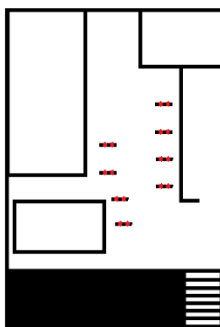
\*\*\*

On arrival, we will check your temperature. To gain entry, confirm and sign the register at the door. We will provide you with hand sanitiser before seating.

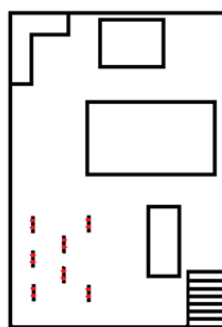
Customers that present flu-like symptoms including a high temperature or do not confirm/sign their details will be refused entry. Masks are welcome but are not mandatory. Your host will give clear guidance at the start of your experience and throughout your tour.

- Keep to 1-meter apart when not seated
- Do not share equipment or glasses, your host will bring you anything you may need
- Please stay seated or at your station unless it is to use your assigned bathroom
- Gloves, masks and hand sanitiser will be within arm's reach
- Our gift shop accepts contactless payments only, no cash sales.

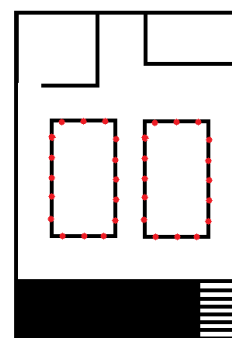
Please make note of your experience Date and Time, we do not send reminders or tickets via post or email.



Unit 21  
Upstairs



Unit 21  
Downstairs



Unit 23  
Upstairs